

Instruction Sheet

Follow these instructions to disassemble and reassemble a fryer for narrow doorways.

Subject: Narrow Door Fryer Disassembly/Reassembly Instructions

11.22.2024

1. Remove the fryer from the pallet.
2. Remove the back by removing the screws attaching the back to the fryer (see Figure 1).
3. Remove the flues by removing the four (4) screws shown (see Figure 2).
4. Slide the flues toward the rear of the fryer to remove the flues (see Figure 3).
5. Remove the flue support brackets by removing the two (2) screws attaching them to the frypots (see Figure 4).
6. Remove the cabinet back supports by removing the five (5) screws attaching them (see Figure 5). When removing the supports, mark each support with the location for easier reassembly. The middle supports have a deeper notch than the outer supports.
7. Loosen the gas manifold unions to disconnect the gas manifold (see Figure 6).
8. Remove the gas manifold (see Figure 7).
9. Remove the filter pan.
10. Relocate the fryer inside the restaurant.
11. Reattach the rear gas manifold removed in steps 7 & 8. Ensure the unions are tight.
12. Reattach the cabinet back supports. Ensure when reattaching the cabinet back supports that the middle supports have a deeper notch, and the outer supports have the narrower notch (see Figures 8 & 9 on the next page).

Continued on the next page.



Figure 1



Figure 2



Figure 3

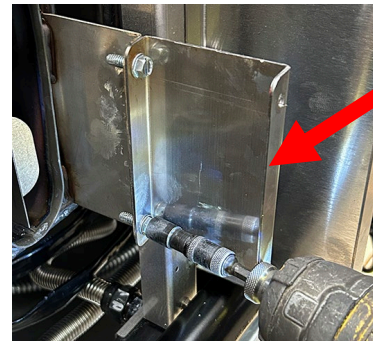


Figure 4

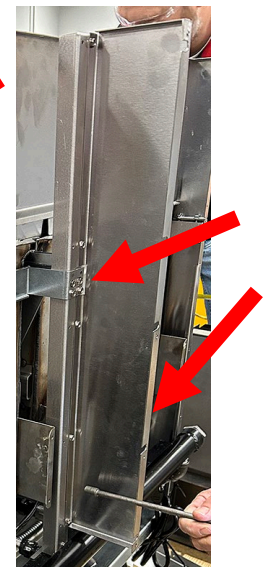


Figure 5



Figure 6



Figure 7

13. Reverse steps 2-5 to reassemble the fryer.

14. Once the fryer is connected to gas, use a soapy detergent solution to check the union connections for gas leaks.

Inner Support with deeper notch

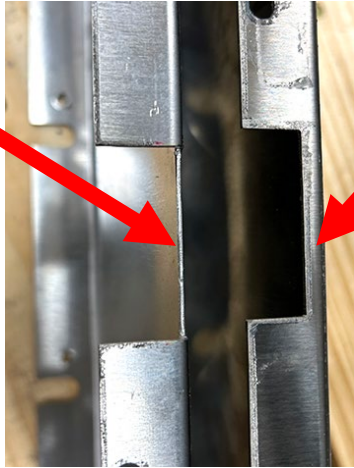


Figure 8

Outer Support with narrower notch

Inner Support with deeper notch to fit around brackets.



Figure 9